

**Pancreatic  
Cancer  
UK**

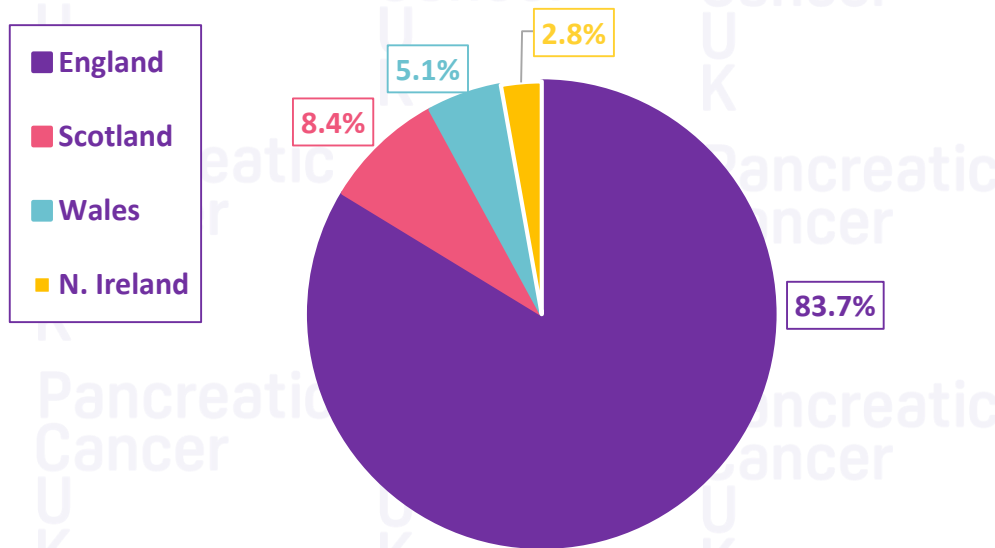
**Pancreatic cancer key statistics**

# Key pancreatic cancer statistics

## Incidence (new cases)

- It is the **11<sup>th</sup>** most common cancer in the UK; 3% of all cancer cases
- Around **10,000** cases diagnosed in the UK every year

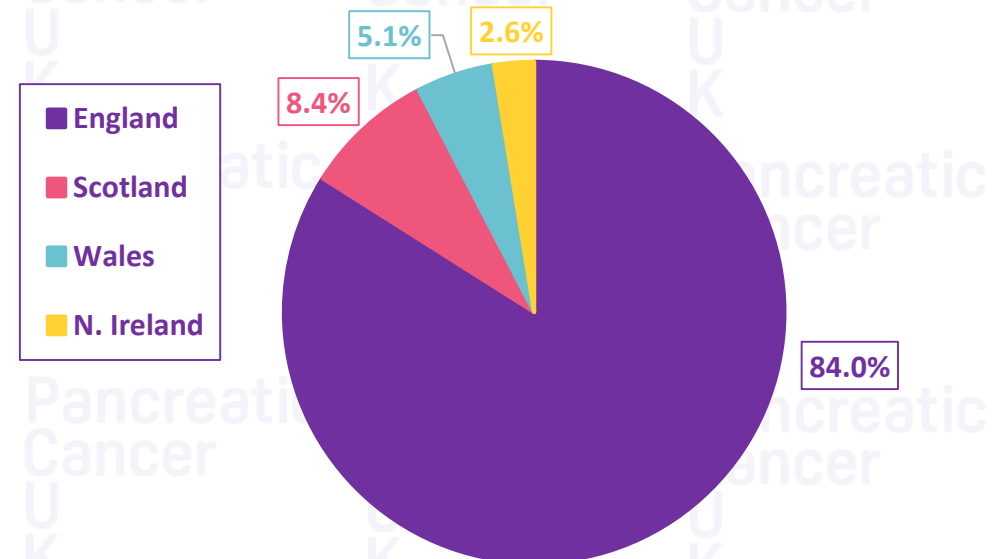
Proportion of cases by UK country, 2015



## Mortality (number of deaths)

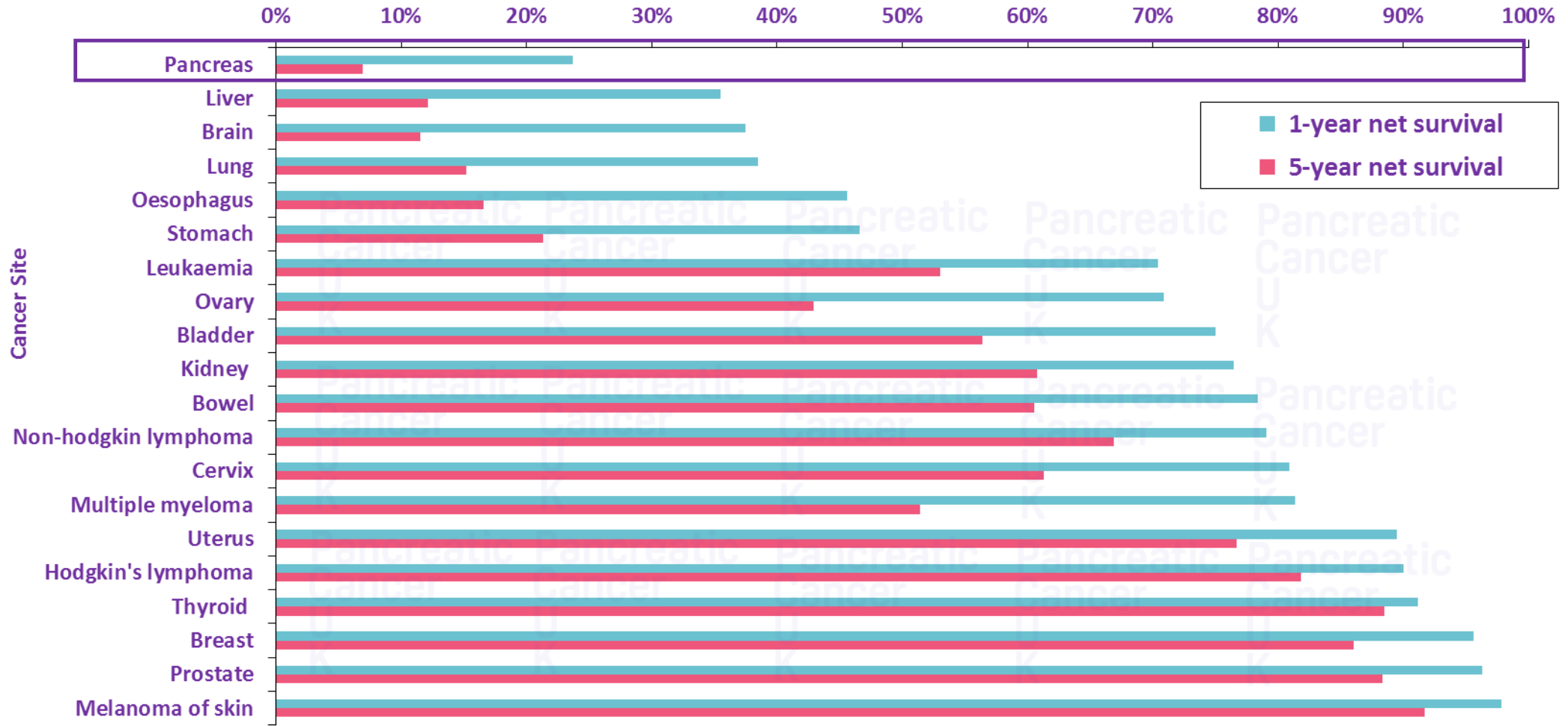
- **5<sup>th</sup>** biggest cause of cancer death
- Number of deaths similar to new cases
- It claims around **9,000** deaths in the UK every year
- Predicted to become **4<sup>th</sup>** biggest cancer killer by 2026

Proportion of deaths by UK country, 2015



# Survival in England

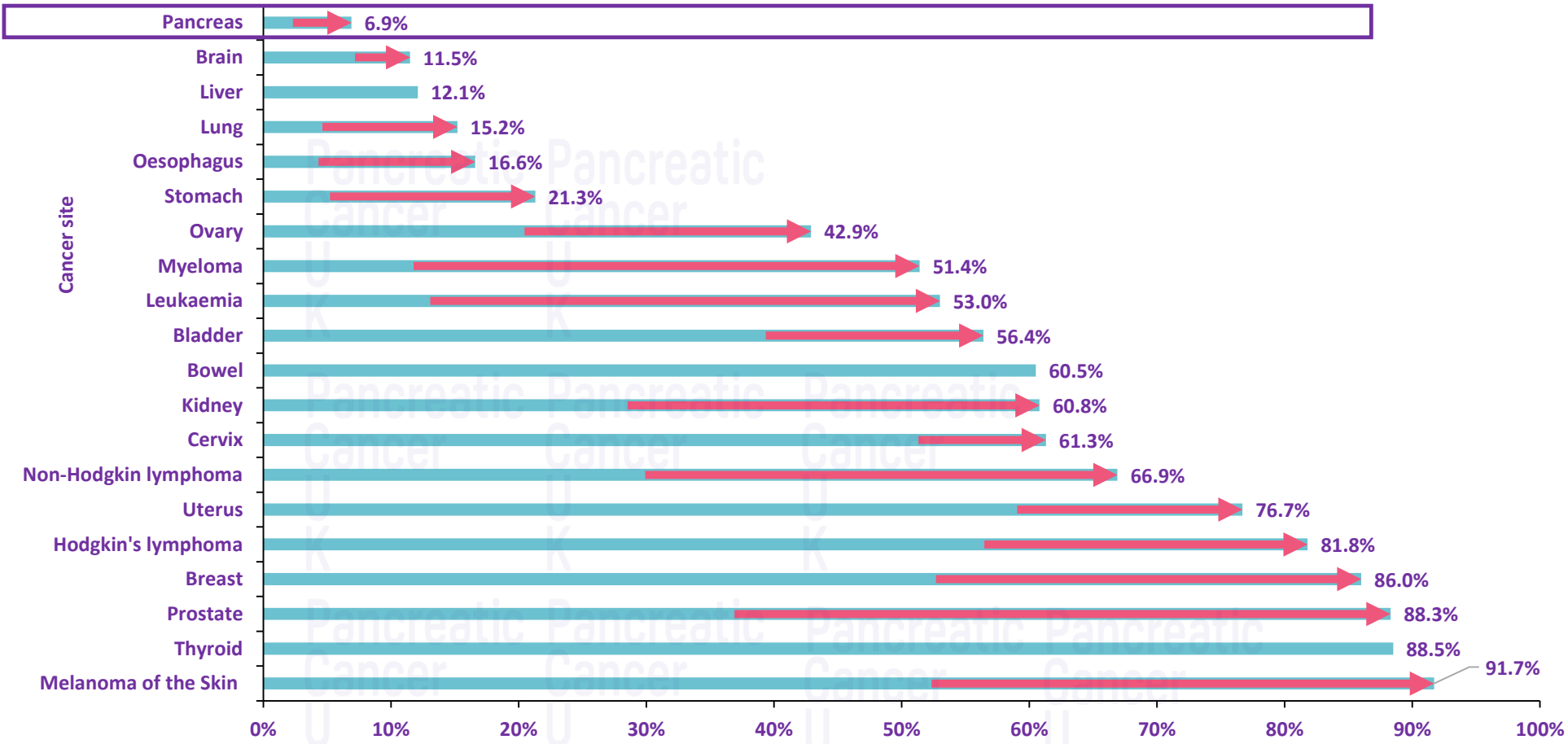
Age-standardised net survival (2011-2015)



After ONS, 2011-2015

# How five-year survival has changed in the last 45 years

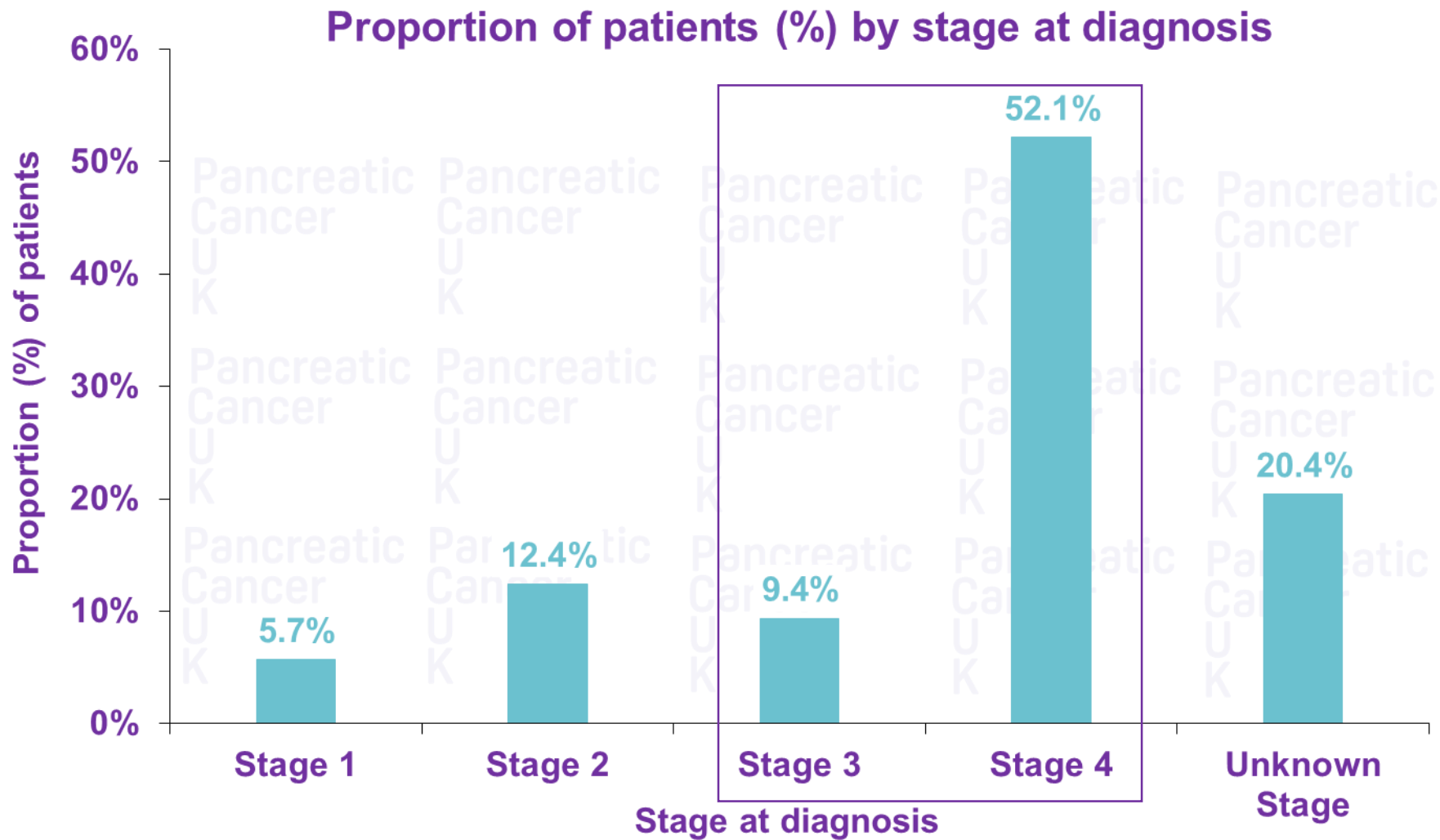
% difference in 5-year net survival between periods 1971-1972 and 2011-2015



Age-standardised 5-year net survival (%)

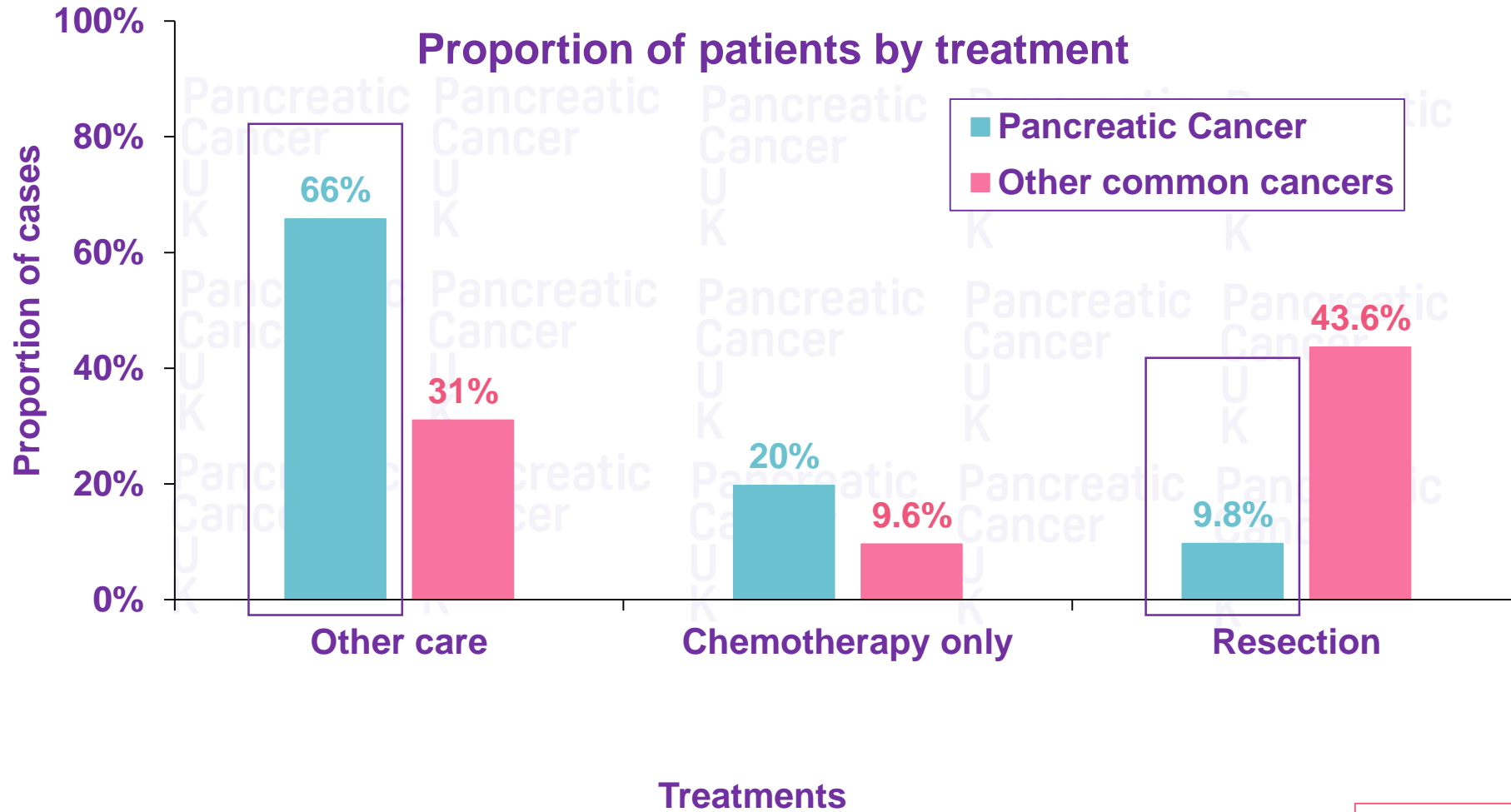
After Quaresma et al., 2014, *the Lancet* and ONS, 2011-2015

At least 6 in 10 patients are diagnosed late



After NCRAS data for 2016

66% of patients will not receive active treatment



After NCRAS data for 2013-2014